



CARDI·OH

Ohio Cardiovascular and Diabetes Health Collaborative



CASE WESTERN RESERVE
UNIVERSITY
School of Medicine

In partnership with:



THE OHIO STATE
UNIVERSITY
COLLEGE OF MEDICINE



COLLEGE OF MEDICINE
AND LIFE SCIENCES
THE UNIVERSITY OF TOLEDO



OHIO
UNIVERSITY
Heritage
College of
Osteopathic
Medicine



Northeast Ohio
MEDICAL UNIVERSITY



University of
CINCINNATI
COLLEGE OF MEDICINE



Sourashtra
School of Medicine
SOURASTRA UNIVERSITY



OHIO COLLEGES OF MEDICINE
GOVERNMENT
RESOURCE CENTER



medtapp



Ohio
Department of
Medicaid



Cardi-OH ECHO

Health Equity and Cardiovascular Risk

February 1, 2024

About Cardi-OH

Founded in 2017, the mission of Cardi-OH is to improve cardiovascular and diabetes health outcomes and eliminate disparities in Ohio's Medicaid population.

WHO WE ARE: An initiative of health care professionals across Ohio's seven medical schools.

WHAT WE DO: Identify, produce, and disseminate evidence-based cardiovascular and diabetes best practices to primary care teams.

HOW WE DO IT: Best practices resources are available via an online library at Cardi-OH.org, including monthly newsletters, podcasts, webinars, and virtual clinics using the Project ECHO® virtual training model.

[Learn more at Cardi-OH.org](http://Cardi-OH.org)



CARDI•OH

Ohio Cardiovascular and Diabetes Health Collaborative



Cardi-OH ECHO Team

FACILITATOR

Goutham Rao, MD

Case Western Reserve University

CONTENT EXPERTS

Karen Bailey, MS, RDN, LD, CDCES

Ohio University

Kristen Berg, PhD

Case Western Reserve University

Elizabeth Beverly, PhD

Ohio University

Marilee Clemons, PharmD

University of Toledo

Danette Conklin, PhD

Case Western Reserve University

Kathleen Dungan, MD, MPH

The Ohio State University

Adam Perzynski, PhD

Case Western Reserve University

Chris Taylor, PhD

The Ohio State University

Kelsey Ufholz, PhD

Case Western Reserve University

James Werner, PhD, MSSA

Case Western Reserve University

Jackson Wright, MD, PhD

Case Western Reserve University

Disclosure Statements



- The following speakers and subject matter experts have a relevant financial interest or affiliation with one or more organizations that could be perceived as a real or apparent conflict of interest in the context of the subject of their presentation*:
 - Danette Conklin, PhD; Kathleen Dungan, MD, MPH; Adam T. Perzynski, PhD; Christopher A. Taylor, PhD, RDN, LD, FAND; Jackson Wright, MD, PhD
- The remaining speakers and subject matter experts have no financial relationships with any commercial interest related to the content of this activity:
 - Karen Bailey, MS, RDN, LD, CDCES; Kristen Berg, PhD; Elizabeth Beverly, PhD; Merilee Clemons, PharmD; Revital Gordodeski Baskin, MD; Allyson Hughes, PhD; George Matar, MD; Kelsey Ufholz, PhD; Goutham Rao, MD; James Werner, PhD, MSSA
- The following members of the planning committee DO NOT have any disclosures/financial relationships from any ineligible companies:
 - Shari Bolen, MD; Anderson Christopher; Richard Cornachione; Carolyn Henceroth; Gillian Irwin; Michael Konstan, MD; Elizabeth Littman; Devin O'Neill; Steven Ostrolencki; Ann Nevar; Claire Rollins; Catherine Sullivan

* These financial relationships are outside the presented work.

** For more information about exemptions or details, see www.acme.org/standards



An Overview of Health Equity

Adam Perzynski, PhD

Professor of Medicine and Sociology
Center for Health Care Research and Policy
The MetroHealth System
Case Western Reserve University

**Special thanks to Joshua Joseph, MD, and
Bode Adebambo, MD, who contributed to a prior
version of this presentation*

Learning Objectives



- 1) Define health equity as it pertains to delivery of healthcare in the United States.
- 2) Give three examples of how specific subpopulations are disadvantaged in terms of health care delivery to mitigate cardiovascular risk.
- 3) Describe a strategy to identify important social determinants of health in the clinical setting.

What is Health Equity?



- **Health equity** is the state in which everyone has a fair and just opportunity to attain their highest level of health.
- Achieving this requires ongoing societal efforts to:
 - Address historical and contemporary injustices;
 - Overcome economic, social, and other obstacles to health and health care; and
 - *Eliminate preventable health disparities.* [1,2]

Health Disparity

“A particular type of health difference that is linked with social, economic or environmental disadvantage.....”

Healthy People 2030

Health Disparity



- Adversely affects groups of people who have experienced obstacles to health

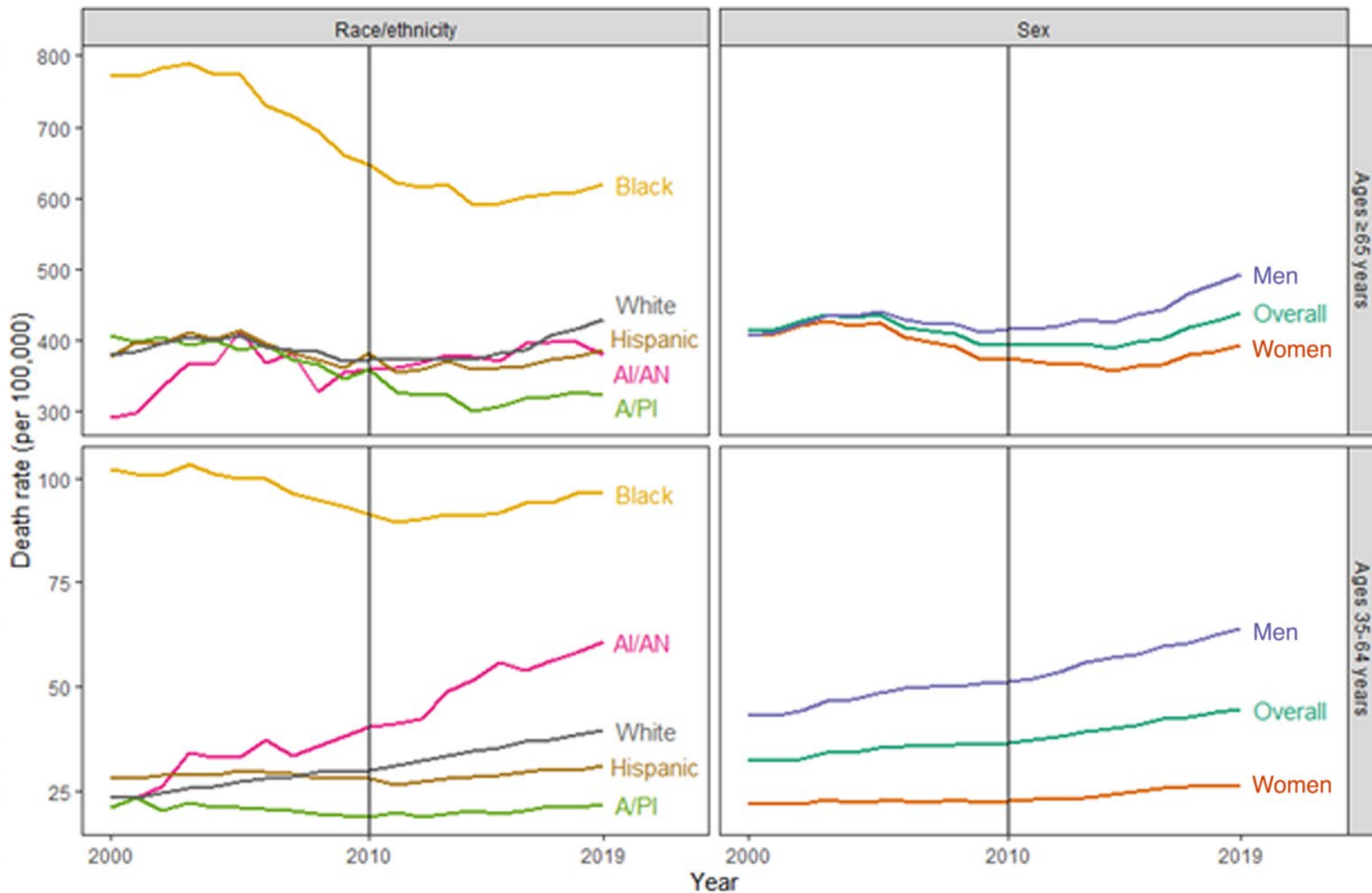
Health Disparity vs Health Care Disparity



- “**Health disparity**” refers to a higher burden of illness, injury, disability, or mortality experienced by one population group relative to another.
- A “**health care disparity**” typically refers to differences between groups in **health** insurance coverage, access to and use of **care**, and quality of care.



CARDI-OH
Ohio Cardiovascular and Diabetes Health Collaborative



Who Benefits from Health Equity?



- Health disparities are **AVOIDABLE**.
- Health equity benefits everyone.
- Every person who dies young, is avoidably disabled, or is unable to function at their optimal level represents not only a personal and family tragedy but also impoverishes our communities and our country. We are all deprived of the creativity, contributions, and participation that result from disparities in health status.
- *CDC 2013 health disparities/inequality report*

Structural Determinants

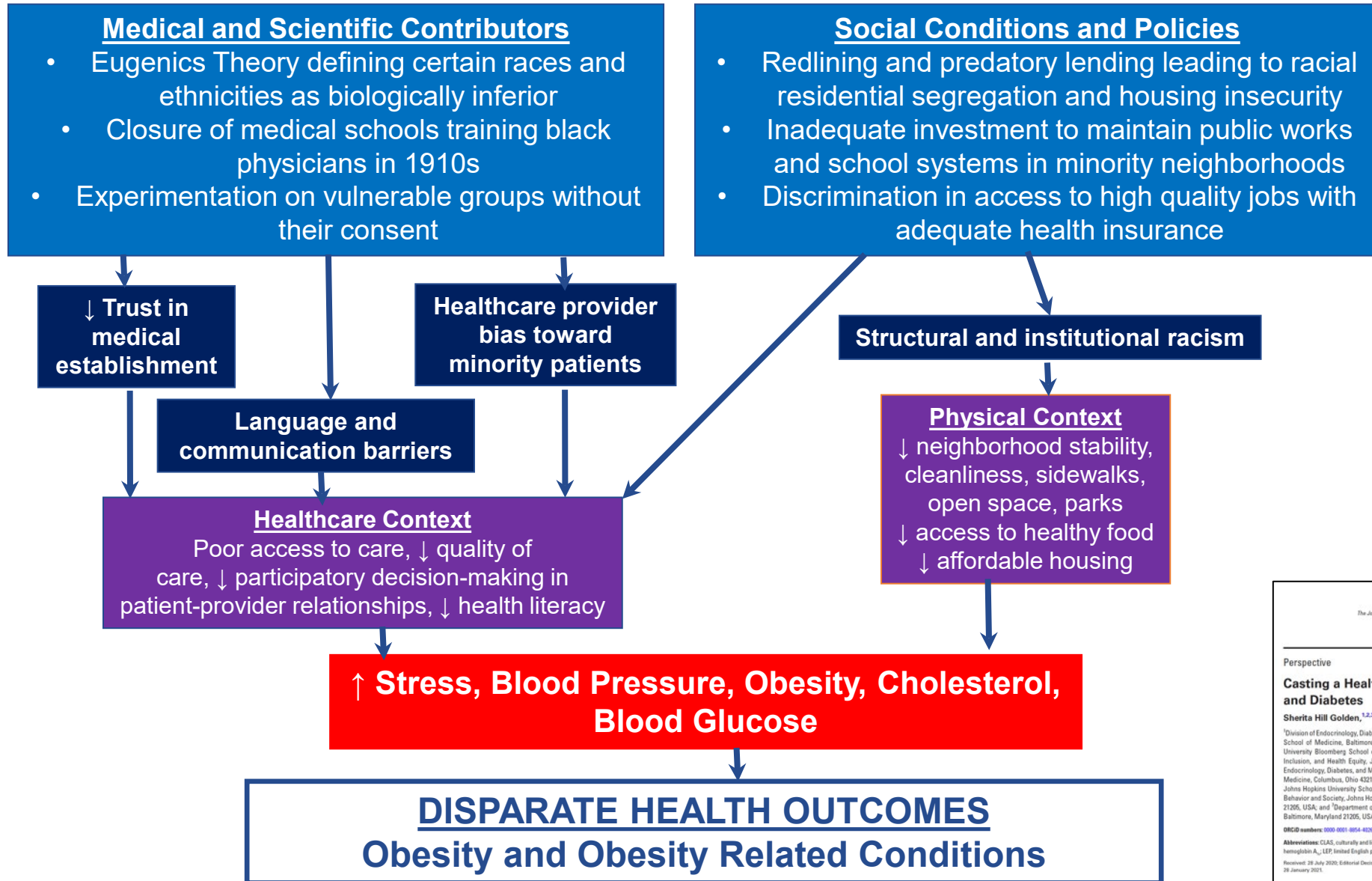


- **Structural racism - racial bias among institutions & across society**
 - This involves the cumulative and compounding effects of an array of societal factors, including the history, culture, ideology, and interactions of institutions and policies that systematically privilege White populations and disadvantage non-White populations.

HISTORICAL DISCRIMINATION AND RACISM DURING SLAVERY AND POST-CIVIL WAR



CARDI-OH
Ohio Cardiovascular and Diabetes Health Collaborative



The Journal of Clinical Endocrinology & Metabolism, 2021, Vol. XX, No. XX, 1-8
doi:10.1210/clinem/abz008

Perspective

Casting a Health Equity Lens on Endocrinology and Diabetes

Sherita Hill Golden,^{1,2,3} Joshua J. Joseph,⁴ and Felicia Hill-Briggs^{3,5,6,7}

¹Division of Endocrinology, Diabetes, and Metabolism, Department of Medicine, Johns Hopkins University School of Medicine, Baltimore, Maryland 21205, USA; ²Department of Epidemiology, Johns Hopkins University Bloomberg School of Public Health, Baltimore, Maryland 21205, USA; ³Office of Diversity, Inclusion, and Health Equity, Johns Hopkins Medicine, Baltimore, Maryland 21205, USA; ⁴Division of Endocrinology, Diabetes, and Metabolism, Department of Medicine, The Ohio State University College of Medicine, Columbus, Ohio 43210, USA; ⁵Division of General Internal Medicine, Department of Medicine, Johns Hopkins University School of Medicine, Baltimore, Maryland 21205, USA; ⁶Department of Health, Behavior and Society, Johns Hopkins University Bloomberg School of Public Health, Baltimore, Maryland 21205, USA; and ⁷Department of Acute and Chronic Care, Johns Hopkins University School of Nursing, Baltimore, Maryland 21205, USA.

ORCID numbers: 0000-0001-8054-4026 (S. H. Golden); 0000-0001-9169-8261 (J. J. Joseph); 0000-0002-2894-3279 (F. Hill-Briggs).

Abbreviations: CLAS, culturally and linguistically appropriate services; COVID-19, coronavirus disease 2019; HbA_{1c}, glycosylated hemoglobin A_{1c}; LEP, limited English proficiency; SDOH, social determinants of health.

Received: 28 July 2020; Editorial Decision: 14 December 2020; First Published Online: 18 January 2021; Corrected and Typeset: 28 January 2021.

Sometimes the Avoiding Cardiovascular Risks is Not Simple.



Informing Policy for Reducing Stroke Health Disparities from the Experience of African-American Male Stroke Survivors

Adam Perzynski, Carol Blixen, Jamie Cage, Kari Colón-Zimmermann & Martha Sajatovic

Journal of Racial and Ethnic Health Disparities

ISSN 2197-3792
Volume 3
Number 3

J. Racial and Ethnic Health Disparities
(2016) 3:527-536
DOI 10.1007/s40615-015-0171-2

Volume 3 • Number 3

September 2016

**JOURNAL OF
RACIAL AND ETHNIC
HEALTH DISPARITIES**

An Official Journal of the Cobb-NMA Health Institute



Table 1 Psychological and social constraints on risk factor reduction

Recommendation and odds of continued risk ^a (INTERSTROKE)	Psychological and social constraints (TEAM study)	Example
A. Control hypertension with medication (OR = 2.6) and B. Control lipids with medication (OR = 1.9)	<ul style="list-style-type: none"> Poor access to care prevents effective use of medication and health services Non-adherence due to mistrust or negative attitudes Tailoring of medication (skipping doses, bargaining) Racial discrimination and a lifetime of distress can make hypertension more difficult to treat Expensive medication 	<p>“Man their scheduling... I’m almost at the end of my medication. I’m like oh God I need a refill.” (participant P1)</p> <p>“Sometimes I think of the doctors as just using us as a paycheck. If you get sick who you gonna go see, your doctor, who gets paid, your doctor. If they write a prescription for you they get kickbacks.” (participant P2)</p>
C. Salt restriction and consumption of a diet rich in fruits, vegetables, and low-fat dairy products (OR = 1.4)	<ul style="list-style-type: none"> Cultural traditions including high salt/high fat foods Difficulty/costs in obtaining low-salt/low-fat foods Pressure from family and friends to eat “traditional” foods Knowledge and literacy barriers to reading labels and selecting healthy foods 	<p>“I grew up on soul food all my life and it’s kind of hard for me to change.” (participant P5)</p>
D. Regular aerobic physical activity (OR = 1.4)	<ul style="list-style-type: none"> Inadequate access to safe and affordable exercise programs/facilities Competing demands (stroke survivors are often themselves caregivers for spouses, children, older parents, or siblings) 	<p>“I have a hard time walking... Because a house is not big enough to just get up and walk around any damn place you want. I mean you can do that, but where are you going to go?” (participant P3)</p>
E. Limit alcohol consumption (OR = 1.5) and F. Quit smoking (OR = 2.1)	<ul style="list-style-type: none"> Family, peer, and social network pressures to continue past behaviors Poor mood, negative affect, and psychosocial stress may contribute to increased smoking and/or alcohol use 	<p>“The things that get in the way of staying healthy and preventing another stroke? Okay. We put drinking alcohol.” (participant P9)</p>
G. Weight loss (OR = 1.7)	<ul style="list-style-type: none"> Inadequate access to safe and affordable exercise programs/facilities Depression and psychosocial stress can make weight loss difficult Mobility limitations make exercise difficult Lack of access to healthy foods 	<p>“My left side is pretty much paralyzed, so I have a hard time getting around or using the whole left side of my body.” (participant P4)</p>
H. Control depression (OR = 1.4) and I. Psychosocial stress (OR = 1.3)	<ul style="list-style-type: none"> Current and historical discrimination against African-American men Stigma of mental illness Depression symptoms may be “normalized” or go unrecognized or unreported Changes in social roles after stroke may increase depression and distress Persistent financial difficulties for low socioeconomic status African-Americans contribute to distress and depression. Constrained ability to reduce risks (through blood pressure, exercise, eating right, etc.) can create even more distress 	<p>“I was in a lot of stress the day before I had the stroke.” (participant P1)</p> <p>“The top concern is handling stress level, and I heard it mentioned here over and over. When you’re down on yourself, and you just can’t get up and go.” (participant P2)</p> <p>“I would uhm come home some nights and he would be so depressed.” (participant CP3)</p>

Total potential increase in risk, OR = 15.3

^a Odds of continued risk represent 90 % of the risk of stroke [22]

Participants in the focus group sessions emphasized the overriding influence of psychosocial stress, both daily and cumulative, on their ability to engage in effective self-management practices.

I focus on what’s going on with African American men, and one of the reasons why we are having so, so much stress I think a lot of stuff is deal, dealing with stress and social issues... When you start talking about it towards African American men you got to be, the stress got to be at least 75 to 80 percent of why we even had a stroke. (participant 6)

The Power of Neighborhood Factors on Health

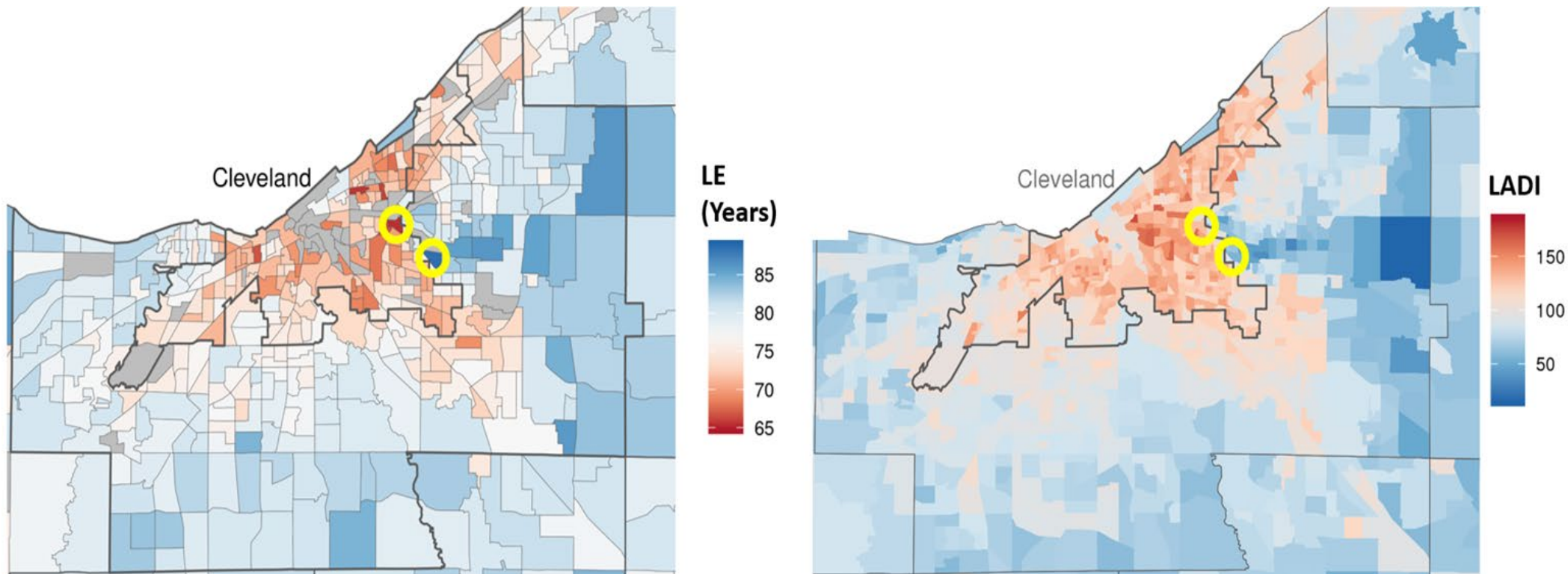
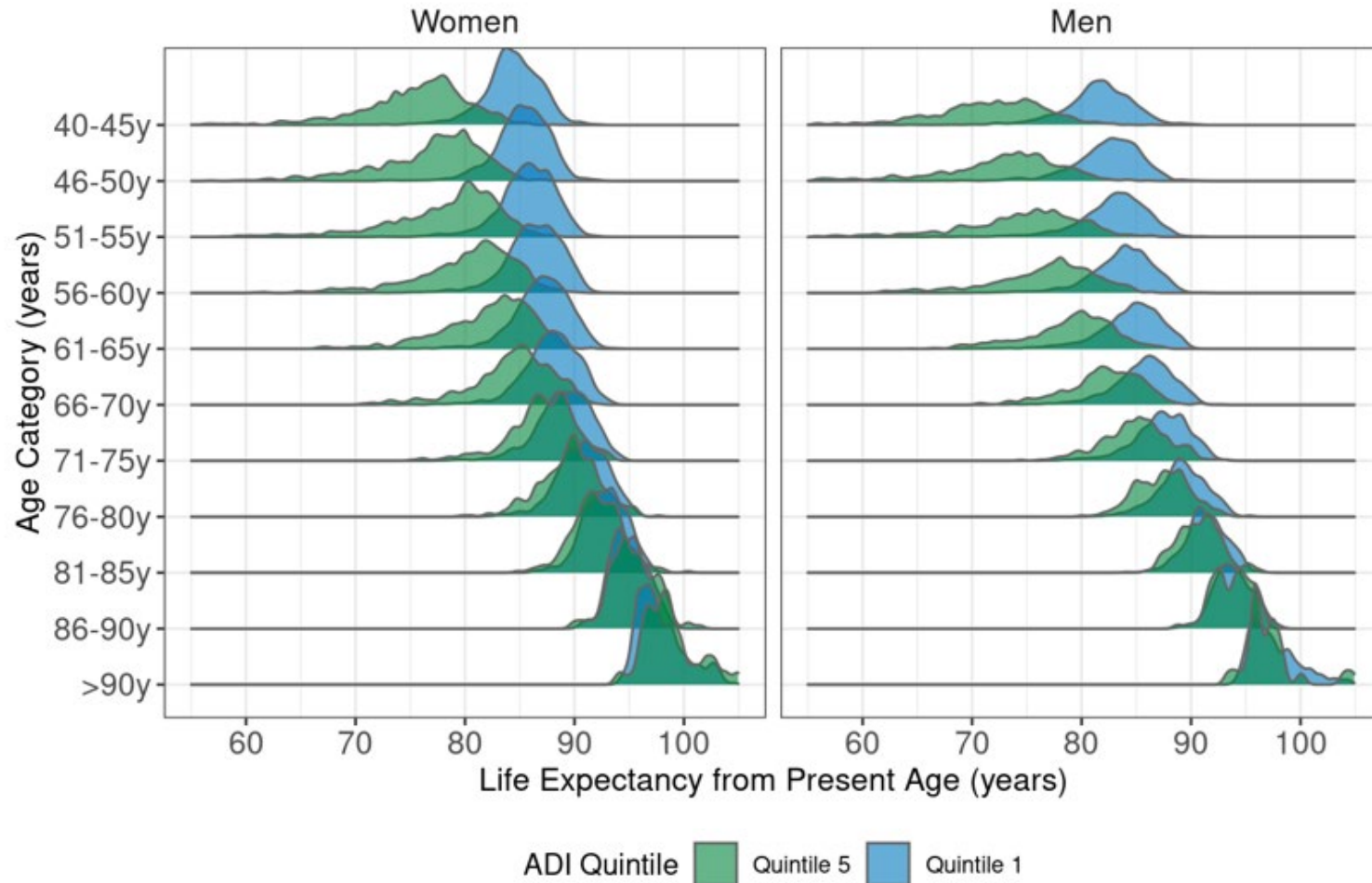


Figure 2. Census tract-level life expectancy (LE, 2010-2015) and localized area deprivation index (LADI, 2017) estimates for Cuyahoga County, Ohio. The tracts with the shortest and longest LE are circled in both panels.

>500,000 Ohio primary care patients who were seen between 2007 and 2021



Dalton, Mourany,
Perzynski, Gunsalus,
Pfoh, Blazel, Taksler
(In preparation)

Effects of Life-Course
Socioeconomic
Differences in Chronic
Disease Incidence on
Life Expectancy in
Middle-Aged Adults

The Power of Neighborhood Factors on Health



- Populations made vulnerable live in inferior neighborhoods with respect to food stores, places to exercise, aesthetic challenges (vacant houses), and traffic or crime-related safety.

Factors associated with cardiovascular risk:

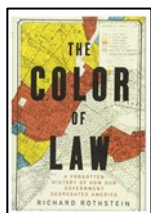
- Poor access to supermarkets
- Less neighborhood walkability
- Less access to recreational facilities
- Toxic physical environmental stressors

Redlining and Historical Discrimination



CARDI•OH
Ohio Cardiovascular and Diabetes Health Collaborative

- 1936 Residential Security Maps developed and utilized by federal agencies (Home Owners' Loan Corp. and then the Federal Housing Administration and then adopted by the Veterans Administration).
- Color to designate the “**suitability of neighborhoods for lending**”.
 - *Best – green, still desirable – blue, yellow – declining, red – hazardous*
- The FHA subsidized builders mass-produced subdivisions for White Americans — with the requirement that none of the homes be sold to African-Americans.
- Areas where African-Americans lived were colored **red** to indicate to appraisers that these neighborhoods were too risky to insure mortgages, “AKA” **Redlining**.
- **Analysis of Ohio data found that neighborhoods with any black residents had 45 times higher odds of being redlined.**



- **Richard Rothstein – The Color of Law**
- <https://www.segregatedbydesign.com> (17 min)
- [NPR Link](#) (35 min)

Berg KA, Coulton CJ & Perzynski AT. (Accepted). Racism and the Racialization of U.S. Neighborhoods: Impacts on Child Maltreatment and Child Maltreatment Reporting. Chapter in *It Takes a Village: The Evolution of Neighborhoods and Implications for Child Maltreatment*, Katz C & Maguire-Jack K Eds. Springer, NY.

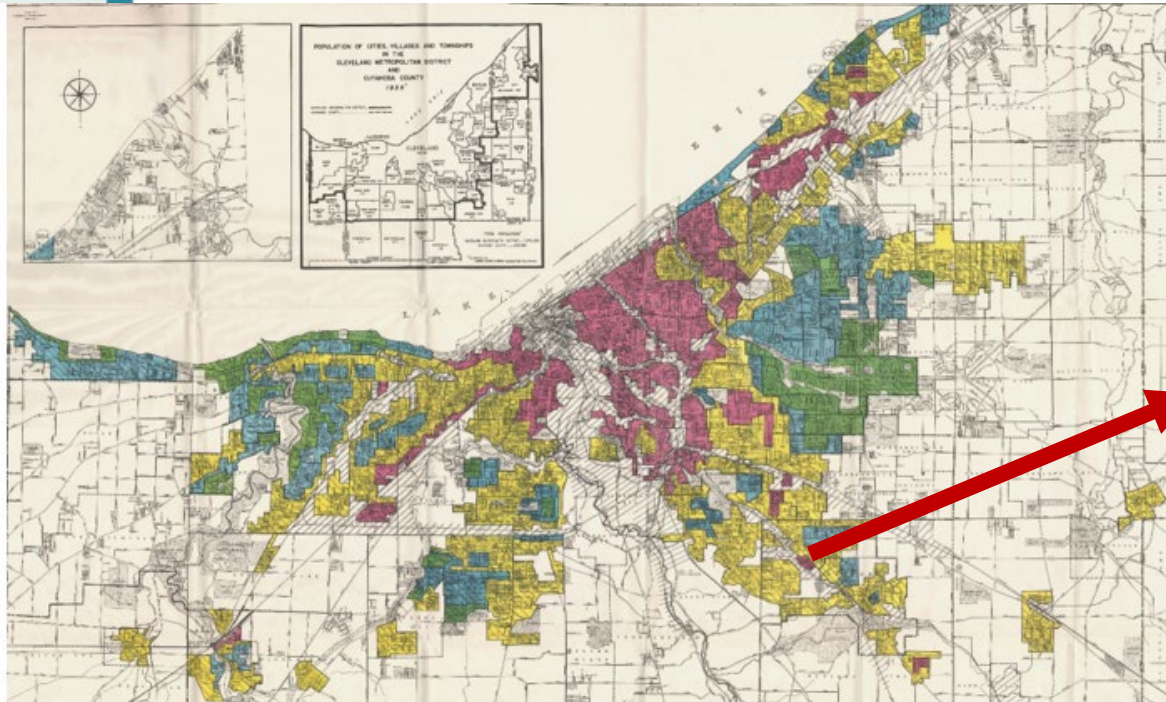
Maguire-Jack K, Korbin JE, Perzynski A, Coulton C, Font SA & Spilbury JC. (2021). How Place Matters in Child Maltreatment Disparities: Geographical Context as an Explanatory Factor for Racial Disproportionality and Disparities. Chapter in *Racial Disproportionality and Disparities in the Child Welfare System* Detlaff AJ Editor. Springer Nature, NY.

Perzynski AT, Berg KA, Thomas C, Cembali A, Smith T, Shick S, Gunzler D & Sehgal AR. (2023). Racial Discrimination and Redlining of Neighborhoods. *Dubois Review*.

Redlining and Historical Discrimination



CARDI•OH
Ohio Cardiovascular and Diabetes Health Collaborative



“About two years ago strong effort began to decrease the colored occupancy of this area and has resulted in the moving of 33 families (only 50 remaining) some of whom were moved at the city's expense. In each case the removal of a colored family caused the occupancy of a white family in this neighborhood. There is also a tendency towards improvement in the physical appearance of the community during this same period.” 1939, Area D8, Maple Heights

Figure 1A. Home Owners Loan Corporation Map of Redlined Areas in Greater Cleveland from 1940 Map reprinted from a National Archives collection whose access and use is “Unrestricted,” according to the Archival Research Catalog for ARC Identifiers 720357 and 3620183 (NARA website: <http://www.archives.gov/research/catalog/>)

Health inequity is linked to historical inequalities.

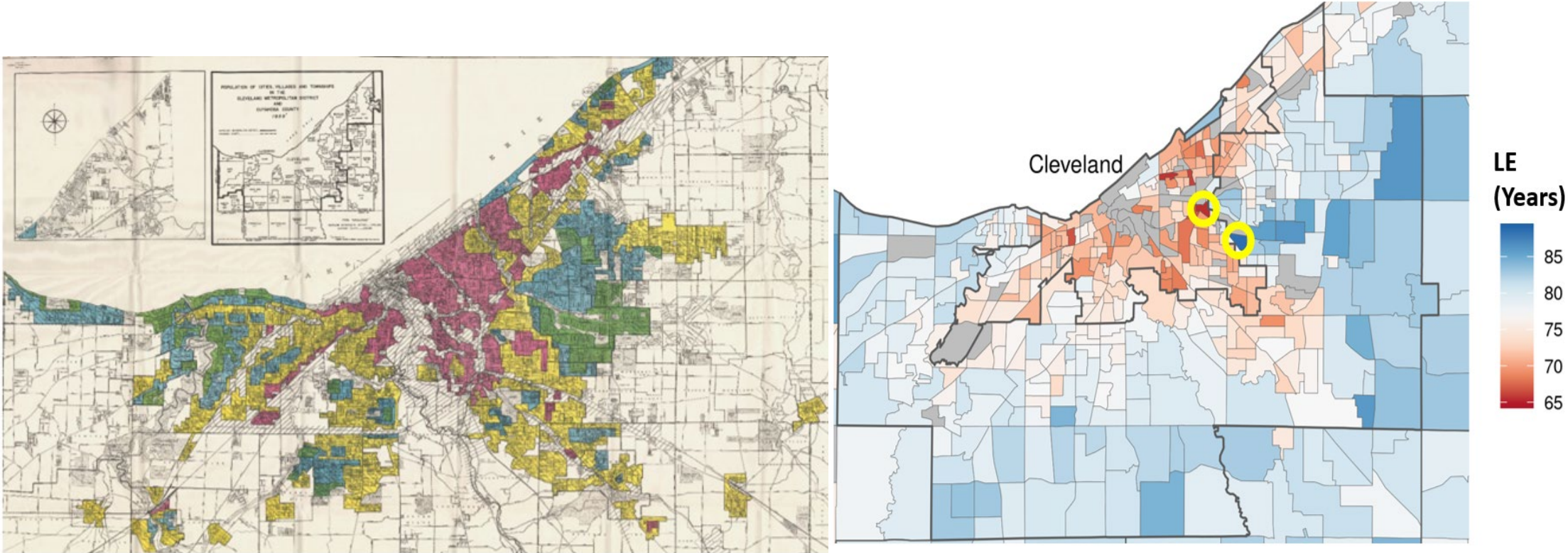
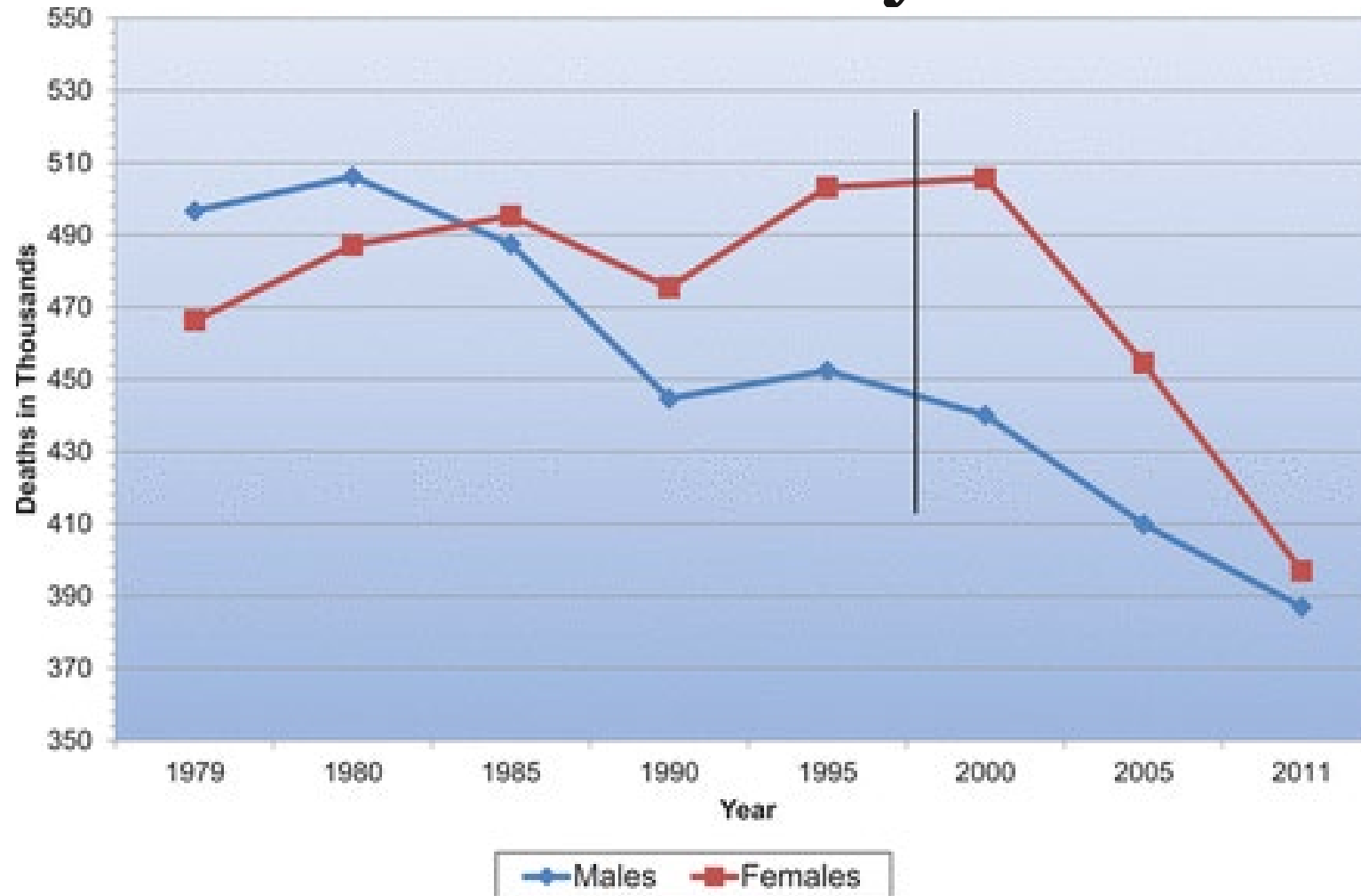


Figure 2. Census tract-level life expectancy (LE, 2010-2015) and localized area Ohio. The tracts with the shortest and longest LE are circled in both panels.

Health Equity Improvement is Possible: Mortality from CVD



Core WHO Recommendations for Improving Health Equity



- Improve Daily Living Conditions.
- Tackle the unequal distribution of power, money & resources.
- Measure and understand the problem and assess the impact of action.

Reflective Questions

- How can learning about health equity influence the way you will provide health care in the future?
- In what ways are you already working to be sensitive to the needs of diverse, vulnerable patients?



Thank you!

Questions/Discussion